

# Infofusion Fusarium 2018-2020

Thomas Börjesson, Agroväst

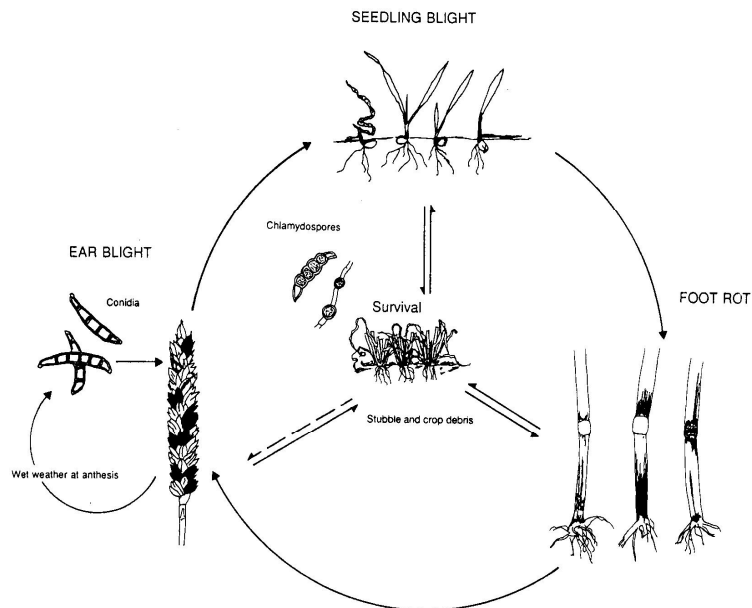


Fig. 1. Generalized disease cycle of *Fusarium* on small grain cereals (from Parry *et al.*, 1994).

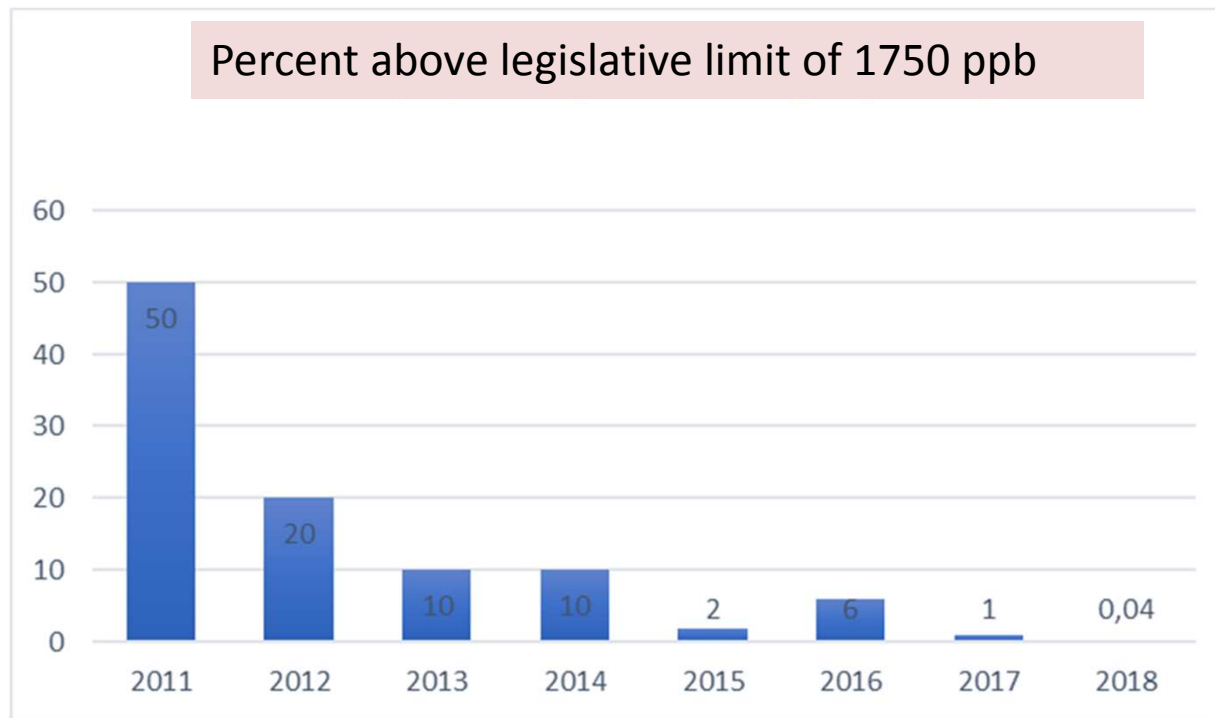


# Agenda

- Background, objectives
- Short about the project

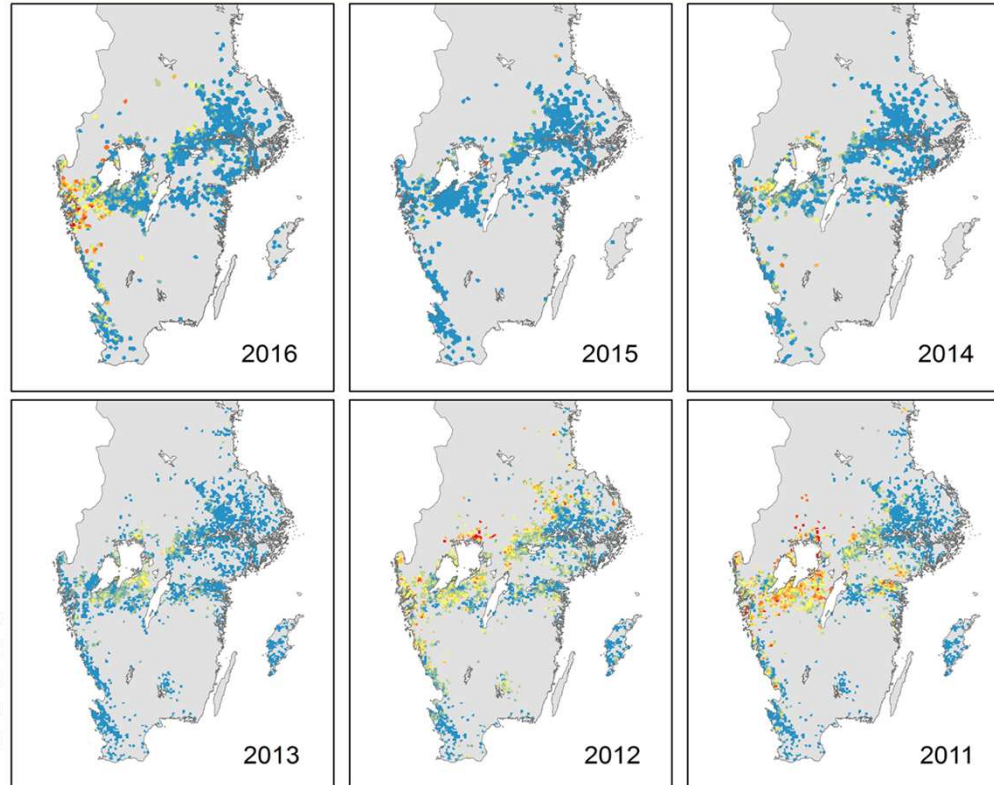


# DON in oats varies a lot between years



# Geographical pattern also variable

**DON**  
in oats  
deliveries



# Objectives

- Develop Farm specific Decision Support System
- Workpackages
  - Develop regional DSS
  - Develop farm specific tool
  - Refine tool together with small user group
  - Software development
  - Validation of tool, adaption, plan for market introduction





# Partners



# Data input weather

GRIDP	DAT	TEMP20MIN	TEMP20X	TEMP20MAX	RH	PREC	OVERCAST	WINDSPEED	WINDDIRECTION
104	20180730	18.40	22.538333	25.74	74.125000	0.08	74.333300	5.399166	138.207916
104	20180731	22.34	23.224583	24.97	80.875000	0.34	49.208300	6.387916	118.896250
104	20180801	20.73	22.751250	25.54	86.625000	4.19	50.000000	5.153750	239.416250
104	20180802	19.48	22.325000	26.79	67.708300	0.00	41.625000	2.942500	307.292083
104	20180803	19.33	22.782500	27.75	65.500000	0.00	6.416600	2.873333	248.496666
104	20180804	19.91	22.449583	25.39	70.666600	0.00	70.791600	5.774583	310.245416



# Data input DON

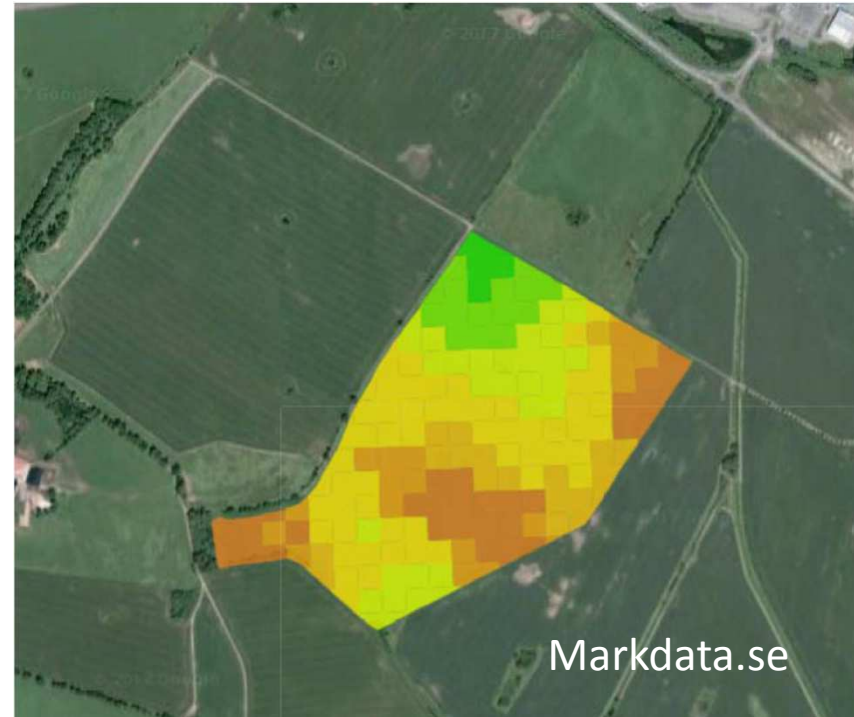
Name	Target value 1	Received quantity	Actual value 1	ZKXNOR	ZKXOST	Receipt date
Grynhavre N+	GALANT	18 880,00	100	6481570	1258882	20160828
Grynhavre N+	GALANT	15 860,00	100	6481570	1258882	20160828
Grynhavre N+	GALANT	9 860,00	100	6481570	1258882	20160828
Grynhavre N+	GALANT	17 740,00	1500	6481570	1258882	20160901
Grynhavre N+	GALANT	14 340,00	1500	6481570	1258882	20160901

- DON-data; about 10.000 data points per year





# Field specific input data

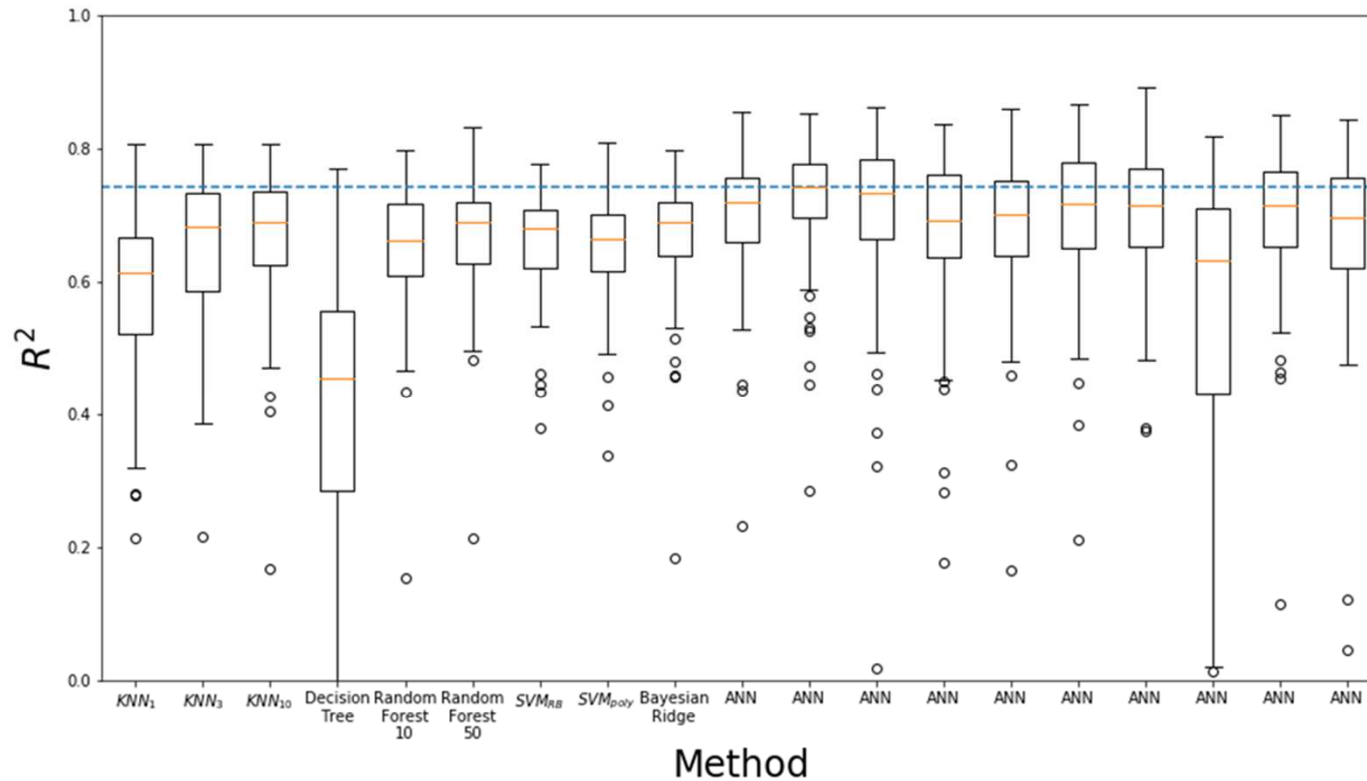


# Results so far

- ✦ Different models have been evaluated for producing regional models
- ✦ Data from individual fields have been added to farm specific data set
- ✦ Gathering of farm specific data that needs active farmer's participation is a challenge, but on it's way



# Models evaluated



# Examples of gathering of farm specific field data: clay contents

